

Primary Care Directory

Enrolment Guide

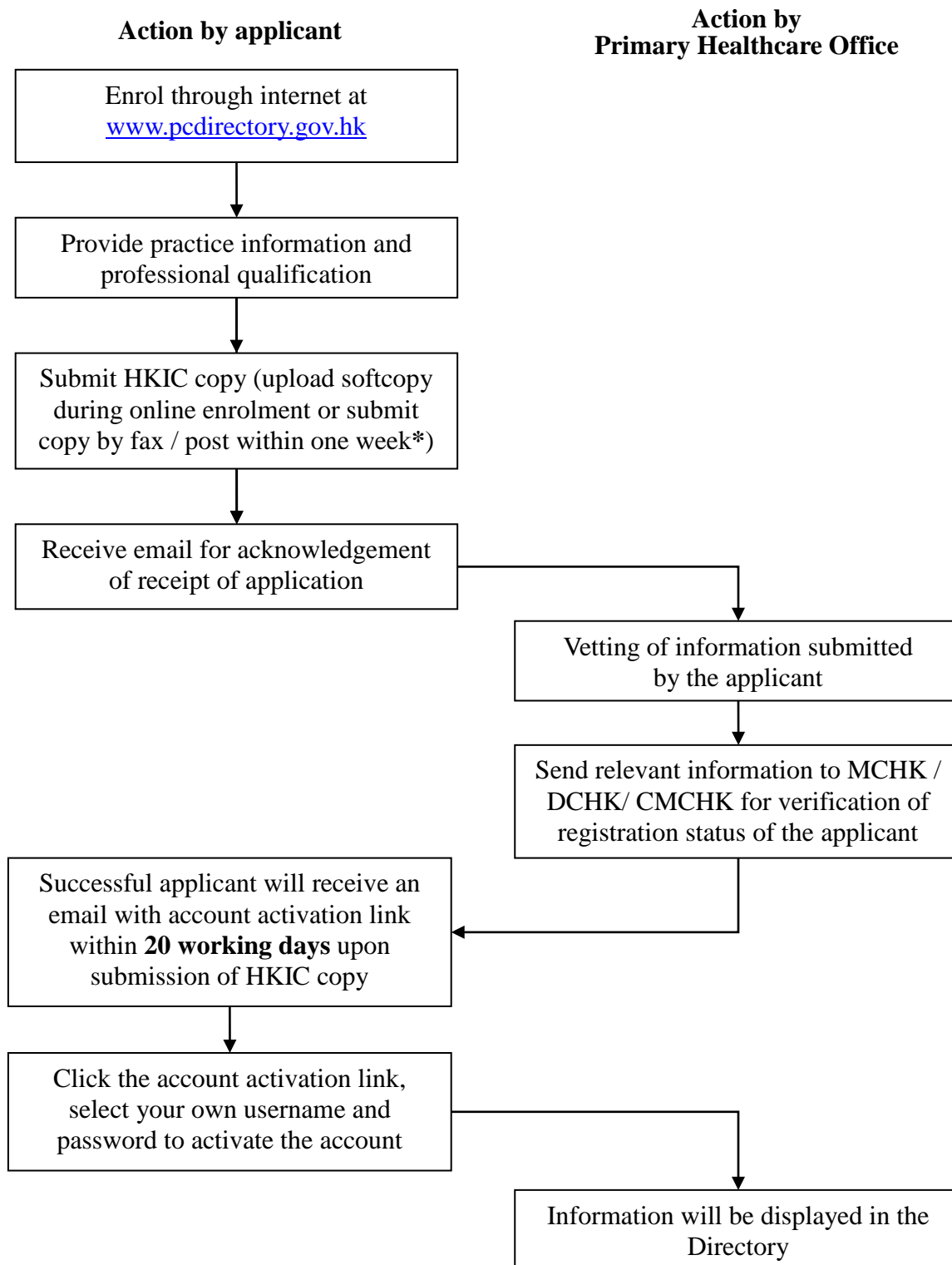
1. Eligibility

- 1.1. Registered doctors, dentists and practising Chinese medicine practitioners (CMPs) in Hong Kong who are committed to providing directly accessible, comprehensive, continuing, co-ordinated and person-centred primary care services are eligible for enrolment in the Primary Care Directory (the Directory).
- 1.2. Please read the [Terms and Conditions](#) of the Directory for details of the eligibility criteria, conditions of maintenance of listing, undertaking and declaration, obligations and notes on use of personal data, as well as other information updated from time to time at the website of the Directory (www.pcdirectory.gov.hk).

2. Application for enrolment

- 2.1. Primary care doctors, dentists and CMPs fulfilling the eligibility criteria of enrolment in the Directory have to submit application as individual primary care providers, regardless of whether they are employed or engaged by Hospital Authority or other medical organization(s) to provide primary care service.
- 2.2. Application for enrolment in the Directory should be submitted by one of the following ways:
 - (a) online enrolment at the Directory website (www.pcdirectory.gov.hk)
 - The major steps are illustrated in the “Flow chart of online enrolment in the Primary Care Directory at the Directory website” (Appendix 1)
 - For further details, please refer to the [Demonstration of Enrolment Procedure](#) available at the Directory website (www.pcdirectory.gov.hk).
 - (b) through the eHealth system (Subsidies) at apps.hcv.gov.hk/en/ (*for enrollees of the Health Care Voucher Scheme and/or the Vaccination Subsidy Scheme and/or Residential Care Home Vaccination Programme*)
 - For details, please refer to the [Enrolment Guide of Health Care Voucher Scheme, Vaccination Subsidy Scheme, Residential Care Home Vaccination Programme and Primary Care Directory](#) (www.chp.gov.hk/files/pdf/enrolmentguide_eng.pdf).
- 2.3. For further enquiries, please contact the Primary Healthcare Office at 3576 3658 or email to pho@fhh.gov.hk.

Flow chart of online enrolment in the Primary Care Directory at the Directory website



* Please submit HKIC copy to the Primary Healthcare Office of the Food and Health Bureau by fax (3583 4549) or post (Unit 1505-06, 15/F, THE HUB, 23 Yip Kan Street, Wong Chuk Hang, Hong Kong) within one week.